



GOTTHARD  
YARD



## GOTTHARD YARD

### Apartment no.13

2+kk

3 NP

SV

PENB: D

13.01 Hallway 4,4 m<sup>2</sup>

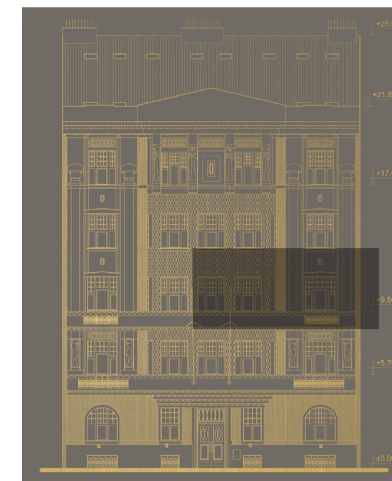
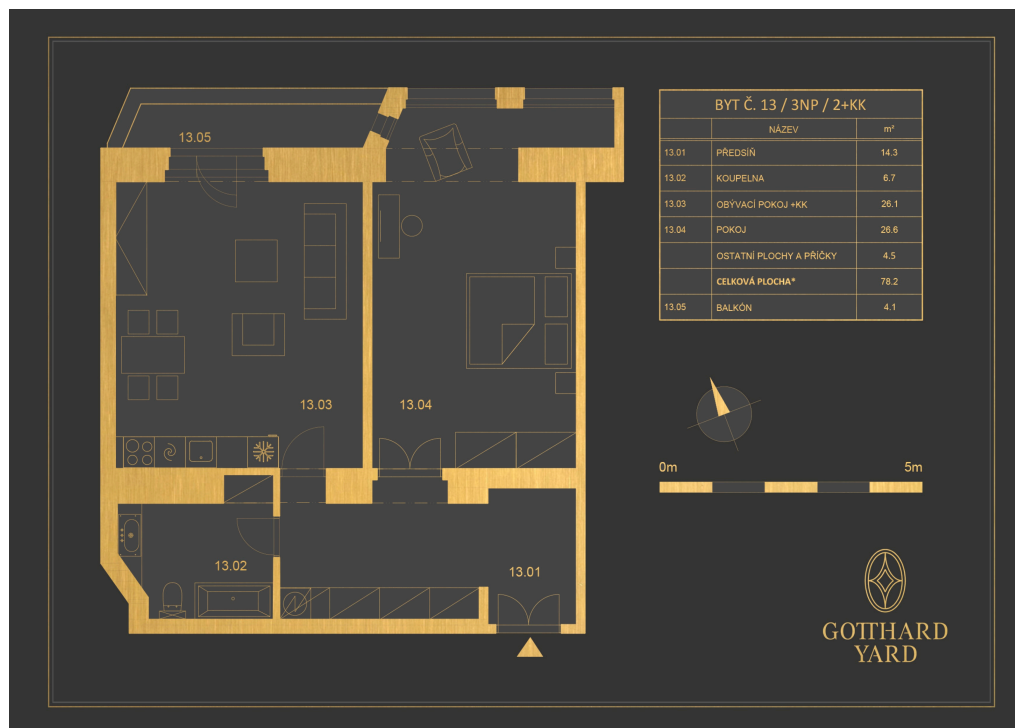
13.02 Kitchen 9,8 m<sup>2</sup>

13.03 Bathroom 6,7 m<sup>2</sup>

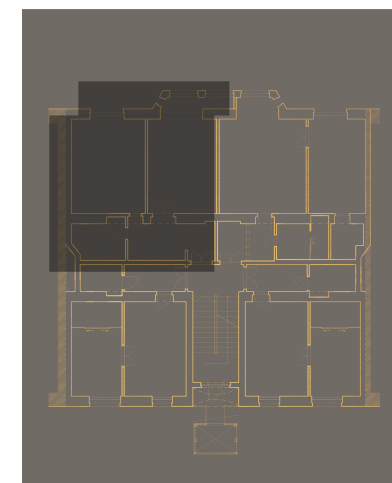
13.04 Room 24,3 m<sup>2</sup>

Other areas and partitions 2,8 m<sup>2</sup>

**The total area\*** 48,4 m<sup>2</sup>



View to house



Floor plan